



## Tony Mitchell Payne

May 10, 1959 - December 9, 2016

Tony Mitchell Payne (57) a native of Hertford County, entered into eternal rest on December 9, 2016 at his home in Greenville NC. Tony was the son of Eugene and Elizabeth Payne.

Left to cherish his memory is his sister Jewell M. Wiggins of Knightdale, NC. and a of other relatives and friends.

# Previous Events

## Memorial

DEC 17. 12:00 PM (ET)

Reynolds Funeral Home  
321 Maple St. N  
Ahoskie, NC 27910  
(252) 332-2337  
info@reynoldsfuneralhomeinc.com  
<https://www.reynoldsfuneralhomeinc.com>

# Tribute Wall



“ *Tony Mitchell Payne*

January 28, 2023 at 07:47 AM

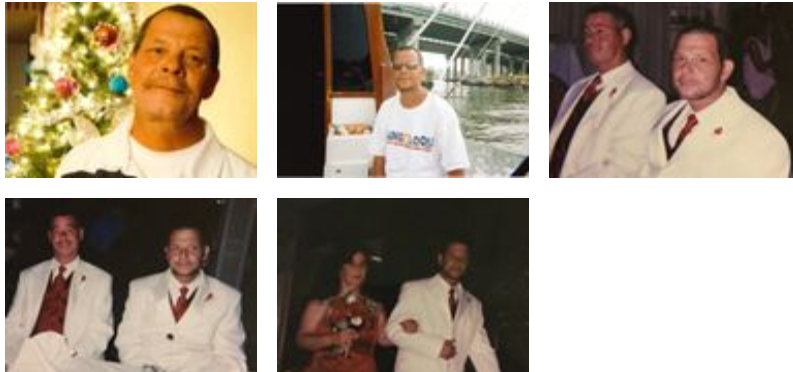


“ *My sympathy goes out to the family during your time of grief. May God's loving kindness comfort you and help you through this difficult time. Psalms 46 : 1*

Jack - December 20, 2016 at 07:29 AM



“ *22 files added to the album LifeTributes*



Reynolds Funeral Home - December 17, 2016 at 08:22 AM